



Pharmacy Solutions

P: (402) 486-3383

T: (888) 890-6521

pharmacysolutionslincoln.com

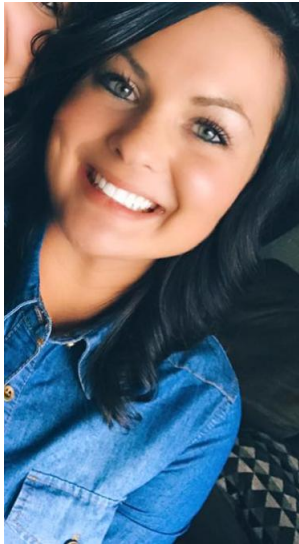
June 2017

The Latest News from Pharmacy Solutions

Hello! My name is Dusty and I'm the new Ideal Protein coach at Pharmacy Solutions! I am so excited to be on board with Pharmacy Solutions, helping people in our community reach their weight loss goals! Previously, I was an Ideal Protein Coach in Hastings Nebraska. I graduated from Hastings College with a bachelors in Exercise Science and am currently working on my Masters degree through Doane University for Counseling.

In my free time I enjoy spending time with my nieces and nephew, trying new recipes, and playing slow pitch softball with my fiancé - our wedding is coming right up this August!

If you have any questions about Ideal Protein, please do not hesitate to ask me anything! The best way to reach me is through e-mail: ip@pharmacysolutionslincoln.com
I look forward to meeting you!



Customized Medications

Compounding is the art and science of preparing customized medications in the best strength and dosage form for each individual. Compounded medications can solve problems that don't respond to commercially available drugs.

Due to stability concerns and the cost of stocking and distributing numerous formulations of each drug, medications are manufactured in a limited number of strengths and dosage forms that will satisfy the needs of most patients. Using pharmaceutical grade chemicals and specialized equipment not found in most pharmacies, we can compound medications in doses and dosage forms that are not commercially available.



We can compound medications into cosmetically appealing topical or transdermal creams and gels, sprays, and powders. Chemicals from FDA-inspected facilities can be utilized to enhance the absorption of topically applied medications.

Oral dosage forms such as lozenges, lollipops and suspensions can be flavored for each individual. Compatible drugs can be combined into a single dosage form to simplify a medication administration schedule and improve compliance and outcomes. We commonly

prepare unique formulations that physicians request to meet specific needs of their patients, or "tried and true" formulas acquired during medical training. Our goal is to optimize the care of every patient. Bring us your medication problems!

© Storey Marketing. All Rights Reserved.



Weight loss that works...

Education that lasts...

Pharmacy Solutions Rx



NEW Authorized Independent Ideal Protein Clinic

\$50 OFF

Get \$50 off the initial start up fee when you attend one of our **FREE** Summer Seminars!

Summer Seminar Schedule

June 20th	12:00-1:00
June 27th	6:00-7:00
July 11th	6:00-7:00
July 18th	12:00-1:00
July 25th	6:00-7:00
August 1st	12:00-1:00

If you are ready to see a real change in your health, RSVP for a seminar TODAY!
E-mail us at ip@pharmacysolutionslincoln.com or call **402-486-3383** to reserve your seat.

***No obligation education on the program**

***Free samples of food**

***\$50 off start-up fee**

Seminars are used as a learning environment to introduce the principles behind Ideal Protein. The focus of this weight loss system is on losing fat, increasing energy and sparing muscle mass through changing eating habits. Seminars are open to the public, but seats are limited & RSVP is required.

Pharmacy Solutions Rx

5750 Hidcote Drive, Lincoln NE 68516
P: 402.486.3383
E: ip@pharmacysolutionslincoln.com



Refer a Friend

AND YOU'LL BOTH RECEIVE

\$10 OFF
your next purchase

SIMPLY GIVE THIS COUPON TO A FRIEND, AND WE WILL APPLY CREDIT TO
YOUR ACCOUNT FOR EACH REFERRAL THAT YOU SEND TO PHARMACY

SOLUTIONS

○ ————— ○ was referred by ○ ————— ○
your friends name your name

5750 Hidcote Drive (SE Corner of 56th & Pine Lake Rd)
Phone 402-486-3383 Fax 402-486-4286

Pharmacy Solutions
www.pharmacysolutionslincoln.com



Referral must be a new customer to Pharmacy Solutions

Valid through June 30, 2017

P: (402) 486-3383

T: (888) 890-6521

F: (402) 486-4286

pharmacy@pharmacysolutionslincoln.com



5750 Hidcote Drive
Lincoln, NE 68516